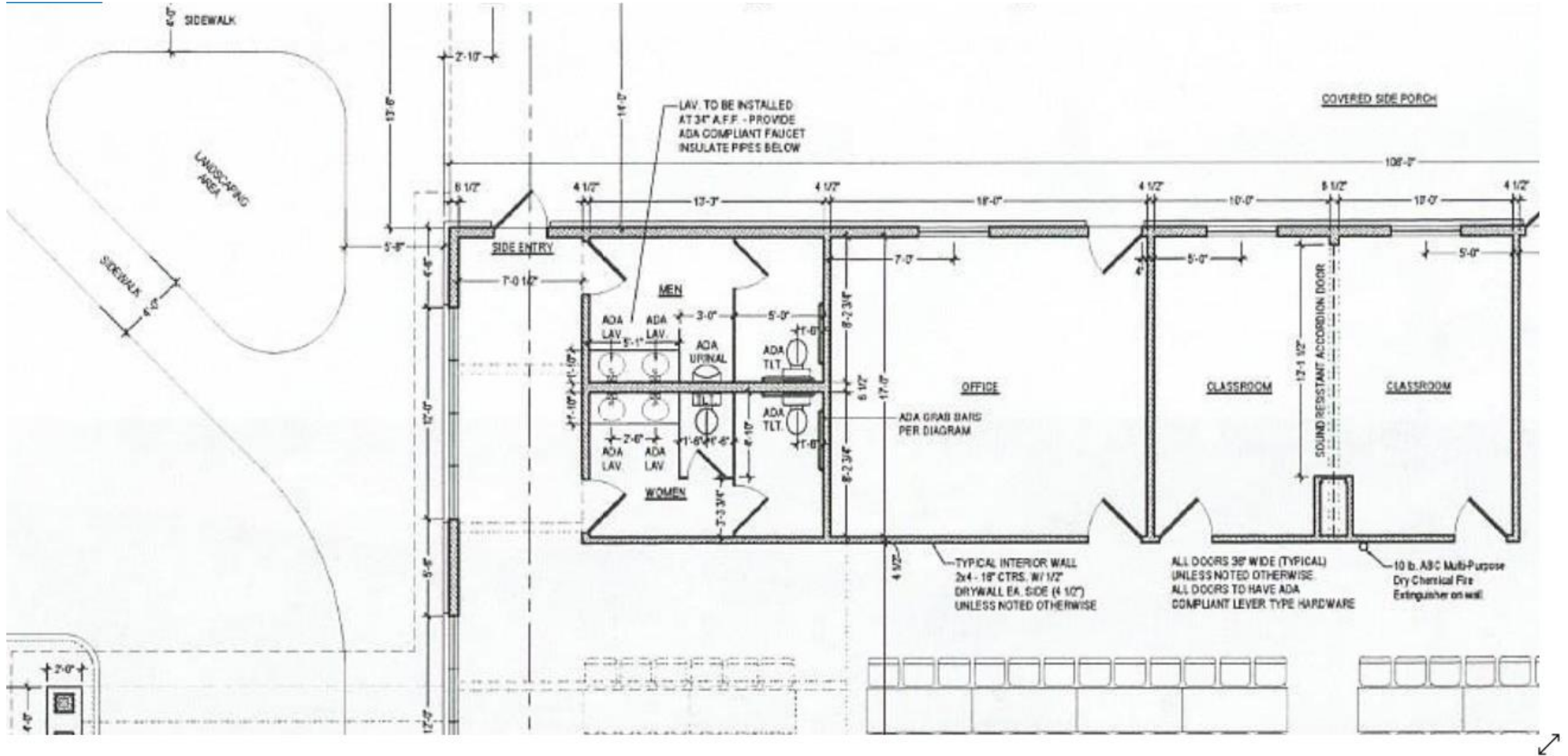
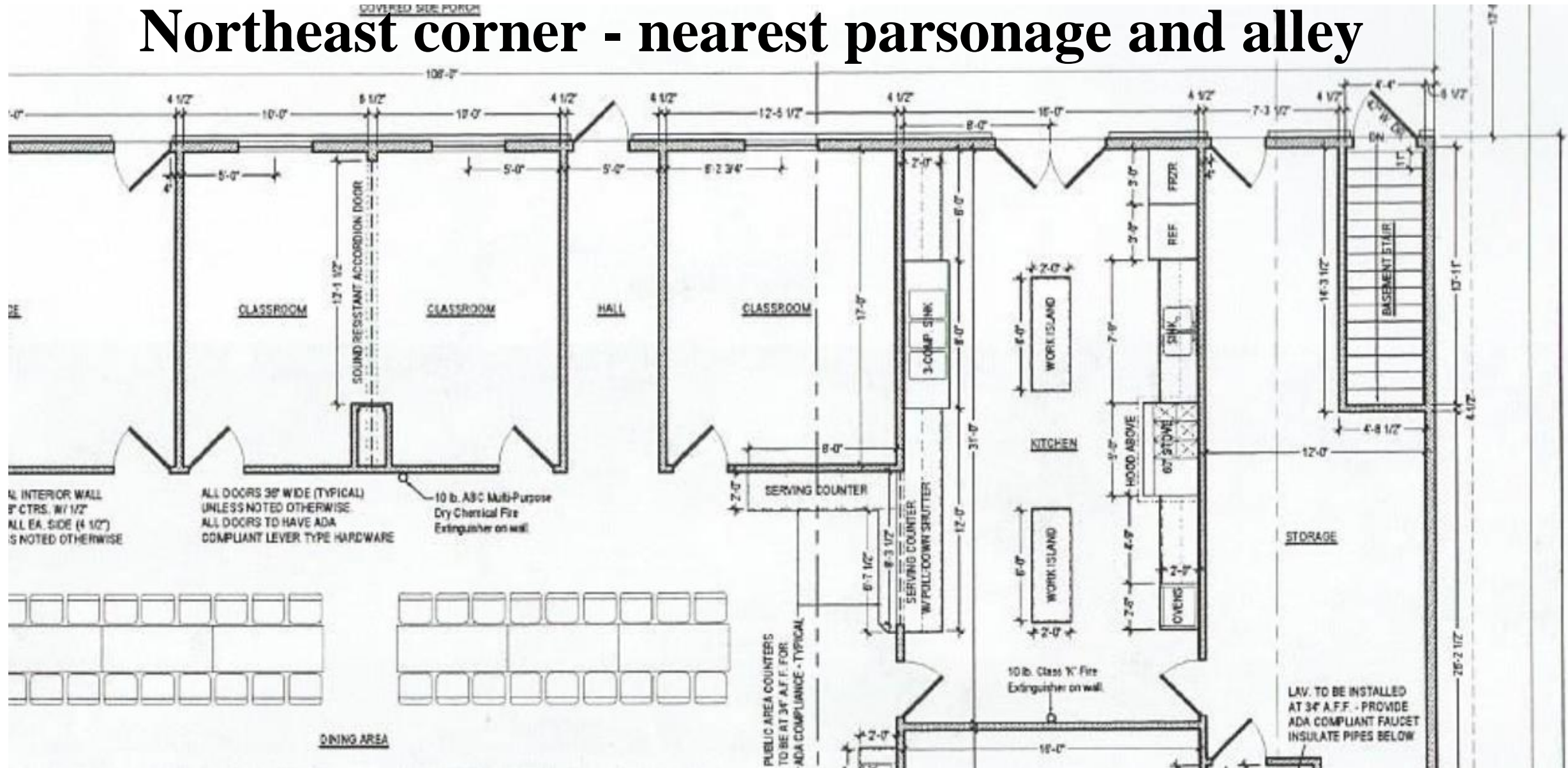


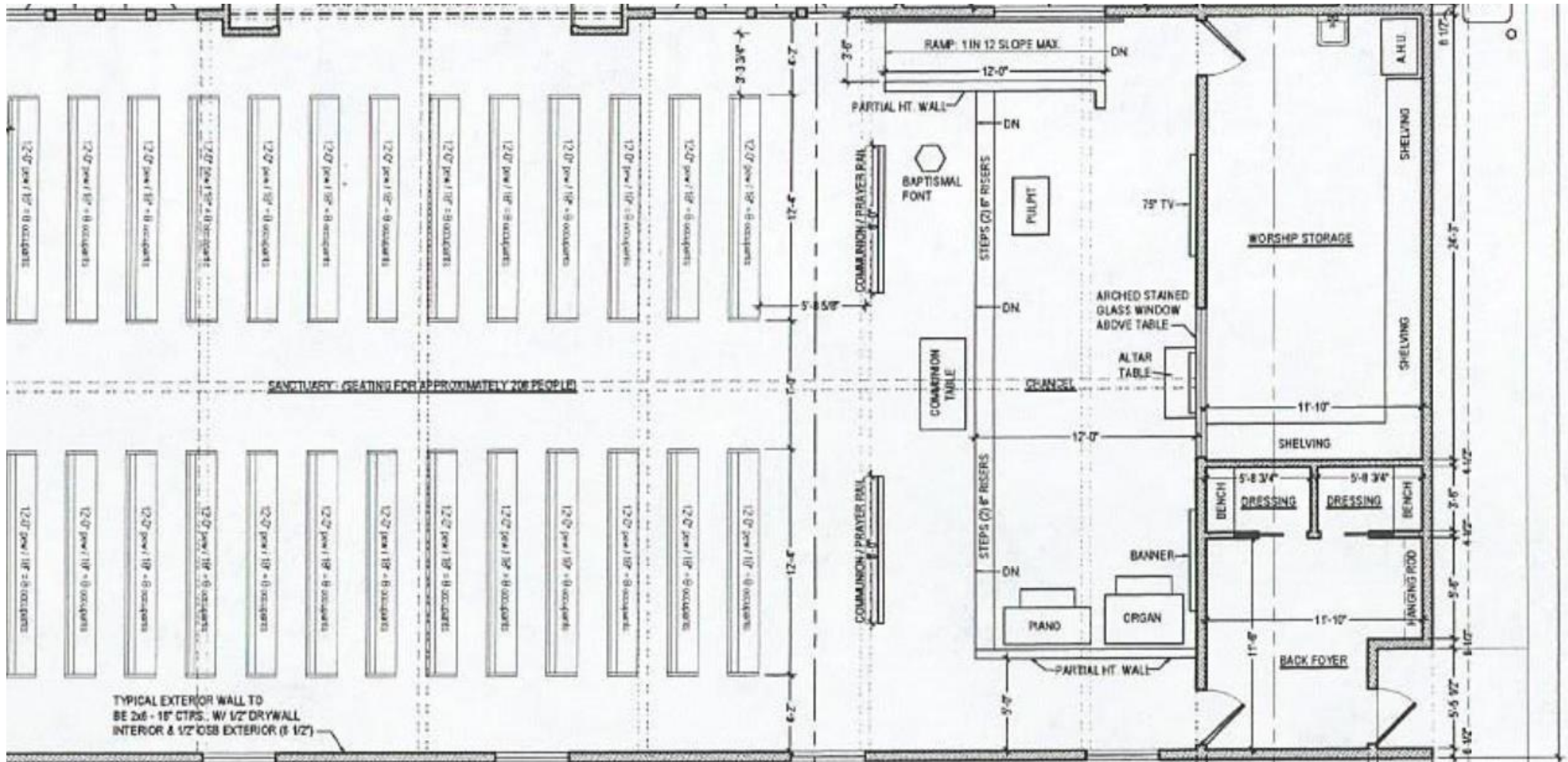
Northwest corner - nearest parsonage and Elm Street



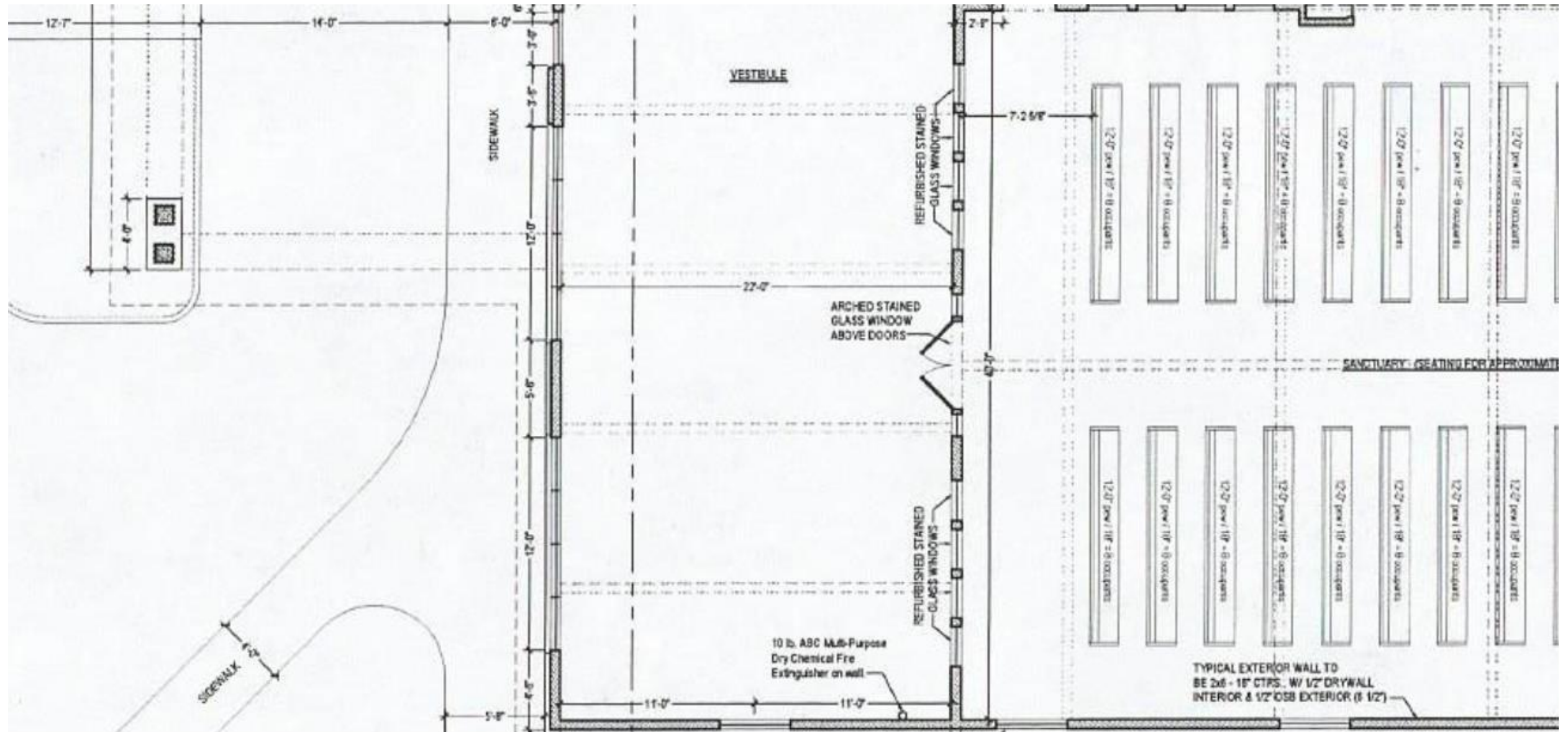
Northeast corner - nearest parsonage and alley



Southeast corner - nearest alley and 4th Street



Southwest corner – nearest street corner



Description:

The following is not intended to be a technical description of the proposed architectural plans, but a simple helpful overview of the proposed structure.

OVERVIEW: The proposed church building is 108 feet long plus a 22-foot covered drive-thru portico on the front of the building facing West. The building is 88 feet wide plus a 14-foot covered side porch on the North side. The building is facing the same direction as our current building: to the West onto Elm Street. The structure utilizes as much space as we can get on the current lot. It takes up “more space” because it is a single-floor structure, whereas our current facilities include public space in the basement.

SANCTUARY: About 40-45% of the new structure is given to the sanctuary, facing due East. The chancel area is just two steps and features an ADA-ramp. On the chancel is the pulpit and organ/piano. Details of the back wall of the chancel are not yet determined, but may feature refurbished stained glass, our 75-inch TV, banners, etc. Below the steps, on the ground floor, is the Communion Table and Baptismal Font. Our current “Communion Rail” can be used in two pieces with a central opening for access to the chancel area. As many of 16 stain glass windows from our current structure can be used around the interior walls of the sanctuary. Sound resistant accordion doors (with wall pockets to collect the doors when opened) creates a large opening between the sanctuary and central dining area. It is proposed to refurbish our current double wooden sanctuary doors and reinstall them as the doors to the proposed sanctuary. The sanctuary is designed to seat 208 people. The inclusion of old pews, new pews, or chairs, has not yet been decided (as of 2/8/21). Behind the chancel area is an accessible worship storage room full of shelving for worship-related storage, plus a sink to wash out our Communion ware or water lilies/poinsettias. There

is a back foyer that allows entrance into the sanctuary from the alley. It shows two dressing rooms with benches. This was included for the use during weddings or other events that require places to change.

DINING AREA: The dining area forms a large “L-shape” space in the center of the building. It was designed for additional table and chairs as the occasion requires. The current plans shows that it can seat 84 comfortably, with the ability to double that number by utilizing the whole vestibule area.

OFFICE-CLASSROOMS: Men and women’s restrooms in the front of the building are NOT single use (women’s features two toilets and two sinks; men’s features one toilet, a urinal, and two sinks). An additional unisex, single-person bathroom is in the nursery/cry-room and another unisex, single-person bathroom is nearby in the storage area behind the kitchen. All bathrooms will be ADA-approved. There is a single office space near the front of the building, followed by two classroom spaces, one featuring accordion doors to make that space become two smaller classrooms as the occasion requires.

KITCHEN: The kitchen is toward the back of the structure, featuring two work islands in the middle, a required 3-part sink for sanitation, and another 2-sided sink; there are places for freezers, refrigerators, and ovens. Serving counters are featured in the dining area and a pull-up shutter creates an opening to serve meals between the kitchen and dining area. A large storage area is featured in the back corner of the building. This storage, perhaps, will be multipurpose due to its large size. It will certainly act as a pantry for the kitchen, and a place for mops and other cleaning supplies.

NURSERY/CRY-ROOM: This room can be found in the middle of the building. Its entrance is off the dining area and includes its own bathroom. A sound resistance glass window that looks out onto the chancel area allows occupants to watch the service while they comfort their child.

BASEMENT: A staircase with outside-access-only can be found at the extreme northeast corner. The basement (not shown) is the size of the storage-and-kitchen area directly above it and will house the boilers and hot water heater. It is not intended for this space to be “public.” The dining area, office, and classrooms will feature a crawlspace which will allow forced-air duct work to heat this portion of the building. The vestibule and sanctuary will be heated floors.

INTERIOR CEILINGS: The vestibule will feature a building-width vaulted ceiling. The sanctuary will feature its own vaulted ceiling. The rest of the building (office/ classrooms / kitchen) will feature a flat ceiling.

EXTERIOR FEATURES: Three AC units will cool the building. The south side of the building will feature 6 windows (open glass). The front of the building will include as many windows as possible to create an inviting, “open” feel. The north side (side closest to the parsonage) will feature a covered porch (I’d like to think of it like the Cracker Barrell porch). It is not meant to be driven on, but a walkway. This porch will feature several side entrances: one door will have access to the office, a double-door will have access to the kitchen, a single door into the storage area, and a door to access the basement. The final two doors will lead directly into the dining area/vestibule. All around the exterior features reimagined sidewalks and parking. The design shows “straight” parking, but conversation has suggested the possibility of angled parking; either way, this new design eliminates the need for “street parking.” A drive-up area in the front of the building will allow easy drop-offs under a covered portico. Several ideas for better usage of the “triangle” across the street (which is owned by the church) has been proposed with no decision.